



FLOHE® GmbH & Co. KG
Rheinstraße 19

44579 Castrop-Rauxel

Telefon: +49 (0) 2305/7003-0
Telefax: +49 (0) 2305/7003-10
Email: info@flohe.com
Internet: www.flohe.com

Catalogue program:

- No. 1 EAF / LF
- No. 2 Reduction furnace
- No. 3 Induction cable
- No. 4 High current cable FHWI
- No. 5 boltless cable
- No. 6 Service
- No. 7 Flexible connections
- No. 8 Electrolyze



Boltless cable

FHWNT-R

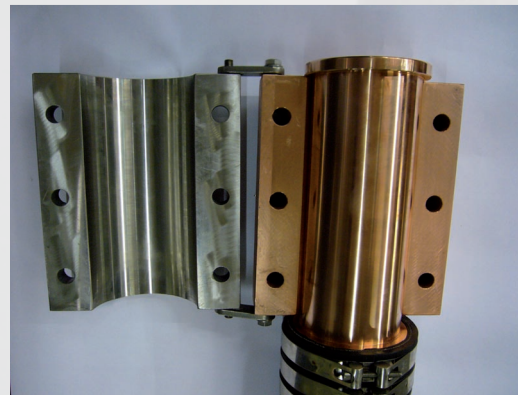
CATALOGUE NO. 5B - 2007



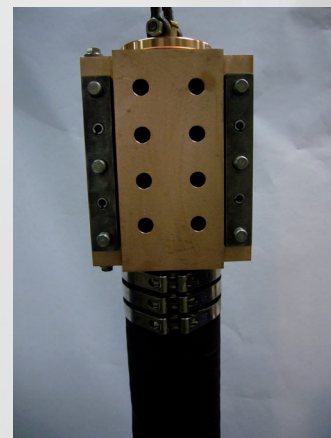
Next to the approved conus quick coupling FLOHE developed a new type for the faster change of high current cables.



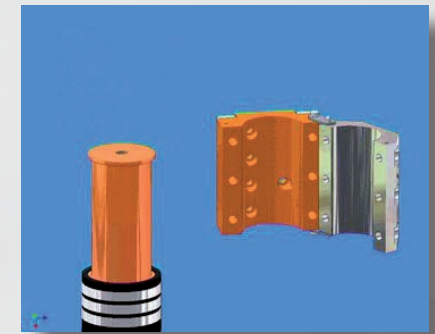
Once only, adapters will be installed at the contact surfaces of the electrode arm and the delta closure.



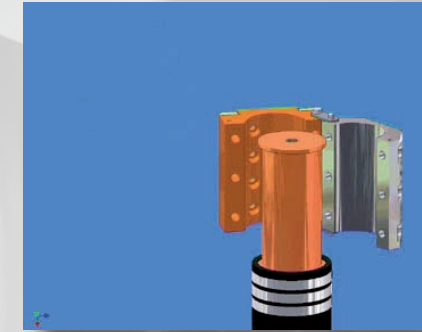
Only a few steps are needed, so that you can use the new round quick coupling.



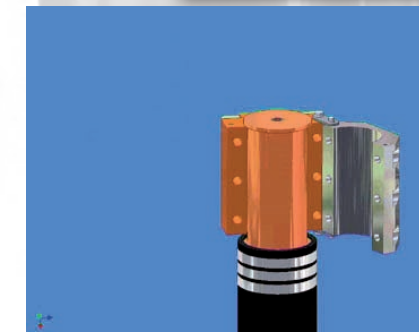
For the first time, it is possible to change the high current cables with an open furnace roof. The time savings will increase during the regular change of the high current cables.



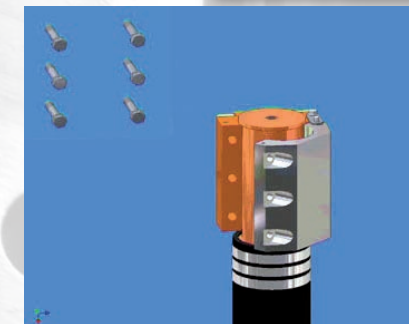
The adapter will be installed at the cable sword of the electrode arm and delta closure



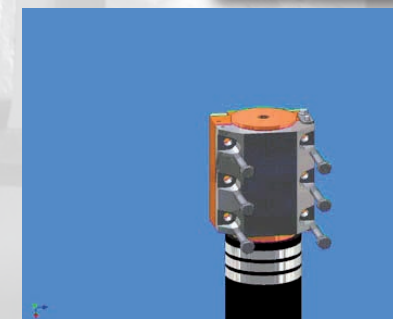
The adapter will be opened



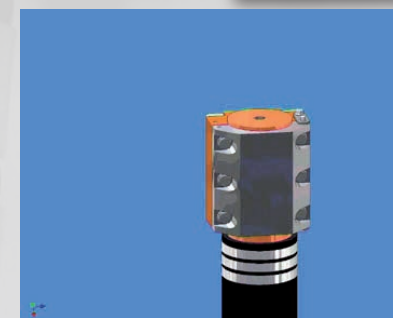
Cable will be suspended by crane



The adapter will be closed



The screws will be mounted and the cable will be lowered



The water connections will be fixed